

## HPD450 Dry Bulk Truck Blower

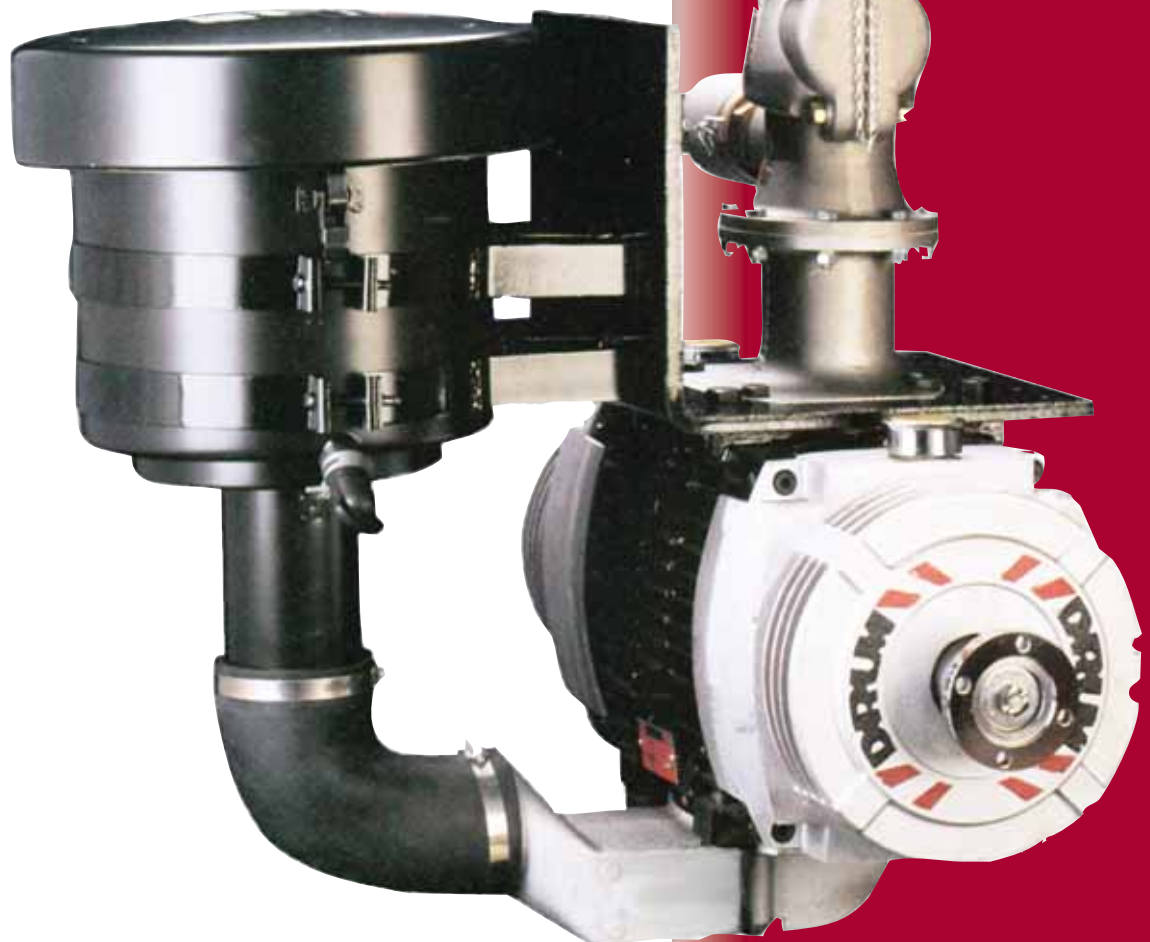
The HPD450 is an economical, compact solution for high performance offloading of dry bulk materials. This efficient sliding vane blower can be configured for mobile or stationary operation and provides completely oil-free air delivery for pneumatically conveying cement, lime, gypsum or other bulk materials.

- **INSTALLATION FLEXIBILITY** - The double end shaft allows clockwise or counterclockwise rotation. The Drum HPD450 for mobile applications includes a K1310 drive flange and mounting bolts and can be driven directly, by P.T.O., belt or hydraulic drive. When used as a stationary blower package, a 40 hp – 1800 rpm motor is provided with pipework and a base frame.
- **EFFICIENT SLIDING VANE DESIGN** - Highest quality, nickel-chrome plated rotor and PTFE coated side plates add to the durability of the HPD450. The special carbon sliding vanes automatically adjust for wear providing continuous maximum performance. The lower rotor speed and efficient design generate less heat allowing for a longer blower life and discharge hose life. The grease packed bearings require little maintenance and the Quick Strip Design allows for easy vane servicing in the field.
- **PERFORMANCE** – This remarkable, compact blower can deliver 325 cfm and up to 25 psig (HPD450) or 325 cfm and up to 29 psig (XHPD450). A satisfied user comments, “Drum can deliver the product at 2500 lbs. per minute, 25 psi., using only 0.9 gallons of fuel to unload 50,000 lbs. of cement in 20 minutes.”



### HPD450 OVERVIEW

- Airflow to 325 cfm
- Pressure to 29 psig
- 100% Oil Free Air
- Compact, Lightweight Design
- Cool and Efficient



# HPD450 Dry Bulk Truck Blower

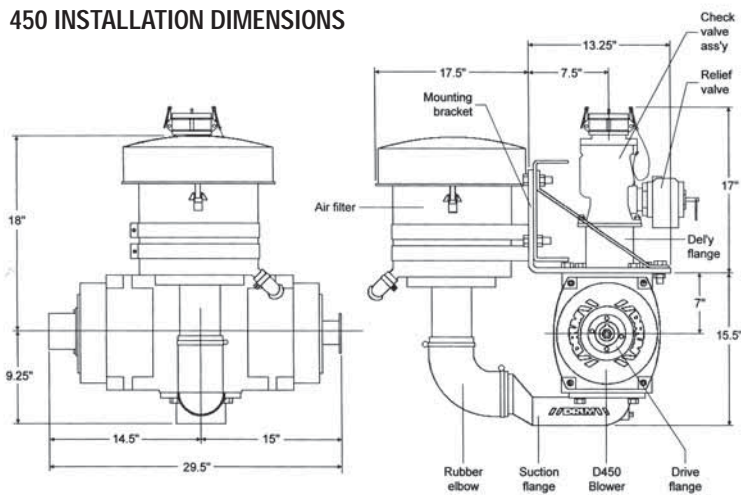
## 450 PERFORMANCE TABLE – PTO DRIVE

PRESSURE	800 rpm		1000 rpm		1200		1400 rpm		1600 rpm	
	CFM	HP	CFM	HP	CFM	HP	CFM	HP	CFM	HP
0	163	9	200	13	240	17	260	20	325	25
5	140	10	190	14	230	19	275	23	320	28
10	142	13	180	17	225	21	270	25	315	30
15	135	14	175	19	220	23	265	28	310	32
20	130	16	170	21	215	26	260	31	300	35
25*	125	19	165	25	210	28	255	33	295	37

## ELECTRIC

1800 rpm	
CFM	HP
370	30
360	32
355	34
345	36
330	40
325	44

## 450 INSTALLATION DIMENSIONS



### DRUM'S LIGHTWEIGHT MOUNTING KIT

- Universal mounting bracket for easy installation
- 2-stage air filter for extended filter life
- Lightweight aluminum discharge pipework
- Spring loaded check valve
- 2-stage aluminum relief valve
- Low profile aluminum suction elbow provides maximum ground clearance
- Bolt-on 3-inch camlock provided for easy maintenance



### DIRECT DRIVE ELECTRIC PACKAGE FOR READY MIX

- 1800 rpm, 40 hp, 20 psi
- 1800 rpm, 50 hp, 25 psi
- Quiet, cool and easy to install



### ENGINE DRIVE PACKAGES

Drum can supply most engines: Deutz, Lombardini, John Deere, Cummins, etc.

As a part of a continuous commitment to product development the company reserves the right to alter the specifications of its products without prior notice.

Contact Your Gardner Denver Representative

For additional information, contact your local representative or  
**Gardner Denver Mobile Solutions**

2501 Constant Comment Place • Louisville, KY 40299

Toll Free: 800-626-6334

PH: 502-266-6677 • Fax: 502-266-5873 • [www.gardnerdenver.com](http://www.gardnerdenver.com)

E-mail: [mobilesolutions@gardnerdenver.com](mailto:mobilesolutions@gardnerdenver.com)

Visit our web site: [www.gardnerdenver.com](http://www.gardnerdenver.com)

For Parts Information, Contact Gardner Denver Customer Service:

Ph: 1-800-626-6334 • Fax 502-266-5873

